

1. Lighthouses



After Clarkson Frederick Stanfield

**Eddystone Lighthouse,
engraved by W.B. Cooke**

1836



Joseph Mallord William Turner

**The Lighthouse at
Marseilles from the Sea**

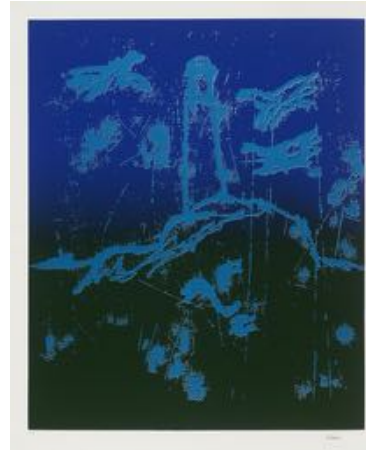
C. 1828



After Joseph Mallord William Turner

**The Eddystone
Lighthouse**

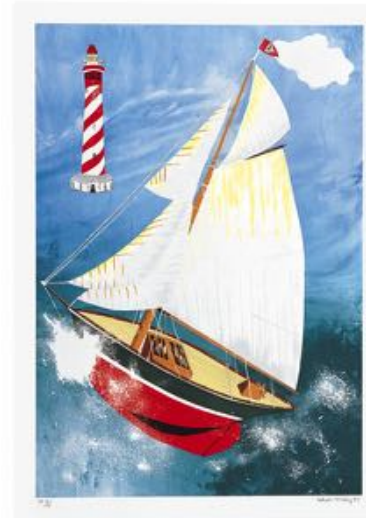
1824



Sir Sidney Nolan

Lighthouse

1966



Malcolm Lord Morley

**Pamela Running Before
the Wind with a Dutch
Lighthouse**

1998

2. How to make a propeller boat

You will need



Lollipop sticks

Scissors

Mackerel tin or margerine tub

(ask an adult to cover the sharp edge if you're using a mackerel tin)

Elastic bands

2 chopsticks or old pencils

Challenge:

Can you find ways to make it even faster?

How about decorating your boat with your own unique designs?

1. Cut lolly stick in half and round off the sharp corner on one half.



2. Put two elastic bands around the tin, one at the top and one at the bottom.



3. Slot a chopstick or pencil down each side of the tin.



4. Put an elastic band round the end of the two chopsticks. If it's a large elastic band, try wrapping it round twice.



5. Put one of the lolly stick halves between the elastic bands and wind it up.



6. With help from an adult, fill your bath or sink and see how fast your boat will go.



3. Shading

Hatching



Crosshatching



Blending



Stippling



Seaside Artwork at The Tate

Shells:

<https://www.tate.org.uk/search?q=shells>

Stormy Sea:

<https://www.tate.org.uk/search?q=stormy+sea>

Shipwrecks:

<https://www.tate.org.uk/search?q=shipwreck>

The Beach



